

E10

NR-13166

NR 8-13166

# INTELLIGENCE PLAN OPN "ECLIPSE"

*First Army*

**UNCLASSIFIED**

Instructors Reading this Document

	Sign Below	(File No. _____)
Name	<i>Page Smith</i>	Date <i>20 Jan 47</i>
	<i>Van Datta</i>	<i>6 May 48</i>

Classification changed to  
**RESTRICTED** OCT 29 1948  
 Authority AGF Ltr 380.1 (14 Mar 47) - GNGBI-4  
 By \_\_\_\_\_  
 JOHN R. PUGH  
 Lt Col, Cav  
 Custodian

**UNCLASSIFIED**

**RESTRICTED**



**UNCLASSIFIED**

I. GENERAL

1. OPERATION "ECLIPSE". Provisions of this plan become fully operative on "A" Day when major military operations against Germany come to a close. In the First United States Army zone of action, however, certain provisions of the "ECLIPSE" plan are now in effect west of the Rhine River.

2. PHASES. The plan for the operation contemplates two phases which for intelligence purposes may be summarized as follows:

a. Primary Phase. The completion of military operations by the seizure of primary strategic objectives in Germany. In the case of First United States Army, many of these objectives are now in our hands.

b. Secondary Phase: The consolidation of the tenure of the First United States Army zone (See Annex No. 1), including the withdrawal of Army units from areas outside the occupation zone which may have been seized prior to the close of military operations. This consolidation implies the redeployment and reorganization of First United States Army forces from an operational to an occupational role.

3. EFFECT OF PHASES ON INTELLIGENCE FUNCTIONS. By "A" Day, a large portion of the area designated as First United States Army zone of occupation will already have settled down to an "occupied" status. In the area now under control of First United States Army, many of the provisions of this plan will already have been put into effect by "A" Day. In any case, during the Primary Phase of "Eclipse", intelligence functioning must be governed largely by normal combat procedure and the main emphasis must be placed on the pin-pointing of remaining resistance, whether active or passive, and the seizure of intelligence targets (See Paragraph 10 below). As the Primary Phase passes into the Secondary, the main effort must be placed on smooth turnover to relieving troops, and on the reorganization of intelligence agencies to deal with the new situation. Further exploitation of the intelligence targets already seized by "T" Force and units of First United States Army should be initiated during the Primary Phase in priority cases, and continued and enlarged upon during the Secondary Phase. It is emphasized that exploitation in both Phases must take full cognizance of the long term nature of the effort.

4. INTELLIGENCE AGENCIES DURING THE OCCUPATION. The transition of intelligence agencies from their present functions in support of military operations to the long term functions of occupation will constitute a major change which must be accomplished with minimum confusion. The transition will represent not only a reorganization, but a broadening of scope. Before considering further the new functions and their effect on intelligence agencies, the enemy situation should be taken into account.

II. SUMMARY OF THE ENEMY SITUATION

5. MILITARY. ✓

a. Operations Prior to "A" Day. In the German territory now held by First United States Army west of the Rhine, all resistance by the enemy has ceased. The majority of the troops who were involved in the fighting here have crossed to the east bank of the River. Undoubtedly, many Rhinelanders discarded their uniforms, and returned to their homes. Individual soldiers, possibly even small groups may still be hiding in forests and other inaccessible places. The rounding up of all such persons will be a counter-intelligence function. On the east bank of the Rhine in that area which forms a part of the semi-permanent zone of occupation of First United States Army, a similar situation will probably exist by "A" Day.

[REDACTED]  
UNCLASSIFIED

b. Operations on "A" Day and thereafter. The military situation on and after "A" Day will vary with the way in which major operations come to a close. The cessation of hostilities may occur under varying conditions:

- (1) Through a formal surrender of the German Government.
- (2) Through a formal surrender of the German High Command.
- (3) Through the complete defeat of the German Armed Forces on the Western or Eastern Front, bringing about the destruction of major elements followed by the piecemeal surrender of others.

c. Disarmament and Disbandment. The rate of disarmament and disbandment will be conditioned by the considerations above, but other elements will apply as well. It may be expected that the reaction of individual commanders at all levels to disarmament and disbandment will vary through all possible shades, from uncompromising refusal to surrender (such as in the case of the possible "citadel" force) to apparently friendly cooperation. The utmost care in checking will always be required, particularly to insure that "cooperation" does not conceal subterfuge. Checking will be complicated by the innumerable T/O's under which the German Army now operates, and by the fact that the equipment and manning of units is often improvised. The turnover of records will present perhaps the greatest problem, as the opportunities for fraud are manifold. A disciplinary problem will be the prevention of the departure of individuals for their homes before they are properly mustered out. A worry in disarmament will be enforcement of the turn-in of the smaller weapons, such as machine guns, which could easily be hidden away for future use in guerilla activity. A security problem will be the possible infiltration of Nazi personnel, either for the purpose of going under cover as PW's, or to incite discontent and mutiny among captured troops. Finally, the possibility of refusal or lack of willingness of the troops to continue to obey their own officers must always be reckoned with. (For a discussion of German evasion and obstruction of the terms of surrender, see Chapter XIII, SHAEF Military Occupation Handbook.)

d. Passive Resistance. A certain amount of passive resistance may be encountered from the military, in the nature of mines, demolitions, long-delay charges and the like. Such activity will more than likely be scattered and uncoordinated, and for this reason troops must be warned to be continually on their guard. No area will be exempt from the possibility of harrassing action of this description. The remoteness of areas from active operations may serve merely to allow time for preparation.

e. Long-Term Resistance. Regardless of how promptly organized operations cease after "A" Day, even if there is an overall cheerful acceptance of disarmament and disbandment, and above all, regardless of any surrender terms, it cannot be expected that German chauvinism and militarism will die overnight. If permitted, the officer class will lose no time in continuing preparation toward the next war. They will be abetted by many other Germans of like sentiment. As part of this preparation, attempts will be made to conceal records and plans, both military and technical, to deny them to us and for future use. Underground factories and storage places may be so camouflaged as to make them most difficult to discover, and later on, some attempt may be made to operate them. Personnel of the Armed Forces and of military industry may go into hiding in Germany or abroad, with the idea of returning later when active watchfulness has died away, or of remaining underground to infiltrate into German industry and economy for nefarious purposes. To summarize, the key to any such scheme for the rebirth of a military Germany exists in the individuals of experience and knowledge, who are willing to devote their lives to working for the day when Germany will overcome her enemies. There are many of these individuals, and they will strive at all costs. They will be clever and it will be most difficult to apprehend them all. Therefore, it is important that we do get all the plans and records they will endeavor carefully to conceal.

~~RESTRICTED~~

~~RESTRICTED~~

UNCLASSIFIED

6. PARA-MILITARY. Germany under the Nazi Party is a hot-bed of secret and open police set up for various purposes. There are many other organizations, some of which are intended to support the Armed Forces proper in war areas, others of which have no particular functional connection with the Armed Forces, but which in a military Germany, are para-military in nature. A noticeable proportion of the population belongs to these organizations. It was by means of them that the Party extended its power. Through them it is able to exercise such an omniscient and therefore final control, that no organized opposition has been permitted even to begin. These organizations furnish the Party its best means to stage a comeback after defeat. It is known that plans for a comeback have been laid and have already begun to be implemented. On or even prior to "A" Day, many of the members of the para-military organizations will go underground as part of the plan, and the diversity of talents of these individuals will enable them to be progenitors, according to plan, of all types of resistance, active and passive. This resistance will be no matter of days or months, it will go on until Germany rises up once again, or until its origins are stamped out. It is a long-term plan, on which surrender conditions, defeat of the Wehrmacht, or even the death of the main Nazi leaders, will have little bearing. Finally, all rank and file of the para-military organizations are potentially dangerous due to long indoctrination with Nazi principles. It is not to be considered that a mere few months in prison will serve to re-educate these persons into becoming civilians, rid of their tendencies towards German militarism and Nazism.

7. CIVIL.

a. The Civil Situation. The Civil situation existing at the present time in the areas already occupied by First United States Army is particularly auspicious for the seizure of intelligence targets and the establishment of occupational intelligence agencies. The German people are still in a state of shock and confusion, Owing to the rapid advance of our troops to the west bank of the Rhine, many intelligence targets have been left behind undestroyed by hastily departing Nazi officials. The many restrictions placed upon the civilian situation under present combat conditions simplify the task of locating both installations and individuals. The attitude of the population today varies from those who still hope for a German victory, or at least a compromise peace, to those who are overwhelmed by the completeness of Germany's defeat. Although conditions are quiet on the surface, there is no doubt that a definite latent hostility against the American military forces exists. Very few of the Germans consider us as their "liberators" or look upon our arrival as a great salvation for Germany. Quite the contrary, many Germans consider our entry into the war as the decisive factor which brought about Germany's ultimate defeat. For the moment, the food situation is not too acute, but later if the supply and distribution of foodstuffs breaks down, it is possible that strife may occur. The civilians in the Rhineland will also be influenced to some extent by the reaction of the remainder of Germany to complete surrender or capitulation by the government or the armed forces.

b. After "A" Day. After the shock of defeat has passed, the people will be affected probably by a deep depression, giving rise to escapist activities and ideas of various descriptions. It is during this period that the effectiveness of the discipline imposed by the occupying authority will receive its most severe trial. During this period also, the population will be at its most fertile state for conversion to the subversive aims of the Nazi underground. Slackness of discipline or relaxation of counter-intelligence surveillance will permit the underlying latent hostility to crop out in active belligerency, directed by the Nazi underground.

c. Return of Discharged Members of the German Armed Forces. At some date as yet unspecified (See Annex No. 5), former members of the German Armed forces will

UNCLASSIFIED

be demobilized under Allied control and sent back to their homes. It is at this point, when millions of young, active men return to civilian status in Germany, that the security problem will assume its greatest proportions. It is then that the secret para-military and political organizations will begin to flourish; that active resistance in the form of sabotage and subversion can be expected. All intelligence agencies of First United States Army must make every effort to stamp out the existing remnants of Nazi Party organizations, and the nuclei of any new clandestine organizations which may spring up as the result of our occupation, prior to the release of the war veterans. The influence of both the Military and the Party must be completely neutralized now, so that there will be nothing left upon which latter-day Hitlers can build.

d. Counterintelligence Situation. For a detailed discussion of the counterintelligence situation, see CI Directive for Germany, 12 Army Group.

e. Displaced Persons and Refugees. (See Annex No. 6).

8. CONCLUSION. Regardless of the exact situation on "A" Day, it can be concluded now that the High Command and the Nazi Party have already begun the execution of a long-term plan for a German comeback. The utmost vigilance will be required on the part of the occupying forces to detect activity which is part of this plan, and to exploit every opportunity afforded in order to gain the most possible information. More in evidence than efforts in furtherance of the plan will be a multiplicity of spontaneous, uncoordinated acts of resistance which will automatically serve as a sort of cover scheme. In the background of this positive activity both inspired and otherwise, will lie the German people, at first inert, but thoroughly German, a fertile field for the seeds of trouble, which can be sterilized only by iron discipline of the kind to which they are accustomed.

### III. INTELLIGENCE FUNCTIONS

9. TASKS. The intelligence mission in Operation "ECLIPSE" is sufficiently different from that of normal operations to warrant detailed consideration. Main tasks are presented below, grouped under functional headings:

a. Operational Intelligence. OI must furnish:

- (1) Routine combat intelligence as long as operations continue whether regular or guerilla.
- (2) Intelligence of the German Armed Forces (Order of Battle and installations and including para-military organizations) to facilitate disarmament, disbandment, and the liquidation of the General Staff, and to enable the checking of information supplied by the Germans.
- (3) Intelligence obtained through research (SHA2F will issue a directive giving scope and requirements) bearing on:
  - (a) How Germany fought the war.
  - (b) The accuracy of our own intelligence during the war.
  - (c) Civil installations, terrain and engineer intelligence (in cooperation with Engineer).
- (4) Current economic intelligence to the extent necessary for evaluation of German economy and industry in terms of capacity to support war. This will not be pertinent in the early stages.

[REDACTED]

(5) Intelligence of political and other trends to furnish due warning of riots or uprisings.

b. Intelligence Operations. Intelligence operations must be conducted to:

- (1) Secure information by interrogation of security suspects, prisoners of war and technical experts. (See Appendix V, this Annex).
- (2) Preserve and study documents (See Appendix IV, this Annex)
- (3) Secure information from whatever sources bearing on how Germany fought the war. This will include information of methods and organization, of economy and industry, and of military, scientific and technological developments. Some of this will be fed to OI for research purposes, all will be sent on to higher headquarters.
- (4) Secure current economic information as required.
- (5) Secure information for the prosecution of the war against Japan.
- (6) Check the current accuracy of German maps (furnish policy for work to be done by Engineer).
- (7) Search existing and new photo cover for secret installations and such other information as is required (See Paragraph 13 below).
- (8) Arrange for visual air reconnaissance to check dispositions, troop movements and traffic flow, at least until the German Army is brought well in hand (See Paragraph 13, below).
- (9) Secure Technical Intelligence (coordination of activities of Special Staff Sections).
- (10) Coordinate with Naval and Air Intelligence; coordinate the activities of visiting specialists, scientists and researchers.
- (11) Coordinate with P & PW in propaganda matters (See Annex No. 7).

c. Counter-Intelligence. (See Appendix II, this Annex, and Intelligence Instructions No. 32, this Headquarters, 14 December, 1944)

(1) The counterintelligence missions are:

- (a) The provision of security for our military interests against espionage, sabotage, and subversion.
- (b) The destruction of the German intelligence services (espionage, sabotage, and subversion), and all security or secret police and affiliated paramilitary organizations.
- (c) The dissolution of the Nazi Party and its affiliates, and the prevention of their rebirth in any form.
- (d) The disposal of the German General Staff Corps, and equivalent Naval and Air Force officers.

UNCLASSIFIED

UNCLASSIFIED

(2) These missions will be accomplished by:

(a) The establishment of port, frontier, and travel security control.

(b) The detection, arrest and detention of such persons as necessary to carry out the above functions.

(c) The collection and processing of all information required to carry out the above functions.

(d) Censorship. (see paragraph 12, below)

(1) Military Censorship: The responsibility for Base Censorship has been assumed by the Commanding General, Communication Zone, and will be conducted in accordance with Circular 6, Headquarters ETOUSA, dated 17 January 1945, subject: "Military Censorship" or subsequent directives on this subject. Unit Censorship is a function of command at all echelons.

(2) Civil Censorship, or the censorship control of civilian postal and electrical communications, and communications carried by civilian travelers, to assist in security of the forces and to collect and distribute information of value to occupying forces.

(3) Press Censorship: The coordination of P & PW in matters dealing with the censorship of the public dissemination services (see Annex No. 7).

#### 10. Intelligence Targets.

##### a. The Seizure of Intelligence Targets.

(1) From the intelligence point of view, the most important aspect of the Primary Phase is the seizure of intelligence targets, some known at present, many more awaiting discovery. "Intelligence targets" may include libraries, archives, and other documents, persons of CI or other interests such as technical experts, experimental and research stations, materiel, headquarters and offices of all kinds, ministries, industrial plants, and miscellaneous army, navy, and air establishments and installations. From the breadth of this definition it can readily be seen that the seizure of intelligence targets is a vast task, and it must be efficiently done, since it is one of the most important elements in the reduction of GERMANY to impotency.

(2) Priorities for Seizure of Installations. The Army Group Commander will furnish a list of the known installations with the priority listed thereon. However, a great many of the targets are discovered in the field during the Army advance. It will, therefore, be left up to the judgement of the Army Commander to indicate priority.

(a) First Priority. Targets in this category will be seized promptly and placed under guard by the Army concerned, until specifically released by Army Group/Zone Hq.

(b) Second and Third Priorities. Targets in these categories will be seized by the Army concerned. They will be placed under guard if practicable. Where guards are not furnished, targets will be sealed and safe-guarded to the extent practicable, for instance by patrols, until exploitation is complete.

(c) Unclassified Targets. The great bulk of targets will be rated at less than Third Priority. This does not mean that they will be neglected, but rather that their seizure and safeguarding must be planned and executed with the exercise of maximum judgement and the setting of local priorities. This category includes the large number of targets of which we will later gain information through actual occupation of the country.



[REDACTED]

(3) Priorities for Arrest of Persons. In many cases priorities for arrest of persons have been indicated. It is obvious in the case of personality targets, that the lower categories will probably be available for arrest before the more important individuals who may go into hiding or may be somehow disposed of by the Germans. For this reason, persons will be arrested as they are found, but in case of an opportunity for choice, those of higher priority will be taken first.

(4) Responsibility. Intelligence units and personnel, such as Target-Force and CIC, will participate in the seizure of intelligence and CI targets, but the problem as a whole is so vast that this will solve only a small portion of the problem. Therefore it is the responsibility of all commanders to apply maximum resources to the seizure of intelligence targets and their guarding after seizure.

(5) References:

(a) Concerning the rapid seizure of high priority targets during the Primary Phase, see Appendix I, this Annex, Target-Force Plans.

(b) Concerning the seizure of CI targets, see Appendix II this Annex; and CI Directive for GERMANY, 12 Army Group, and CIC S.O.P. 12 December, 1944, this headquarters.

b. The Exploitation of Intelligence Targets. Intelligence Targets will be exploited as follows:

(1) First Priority. Targets in this category will as a rule be exploited by headquarters higher than Army/District Hq, or by representatives of "high level" agencies such as CIOS (Combined Intelligence Objectives Sub-Committee).

(2) Lower Priorities. Other targets will be exploited under the direction of Army/District Commander except in selected cases, when Army/District Hq will be notified.

(3) CI Targets. CI personnel will have priority in the exploitation of CI Targets when there are several interested agencies.

II. RESPONSIBILITIES.

a. Primary Phase. During the Primary Phase normal combat functions and procedure will apply for all units which have mobile missions. Secondary Phase functions and procedure will apply for all units which have assumed static missions.

b. Secondary Phase. Paragraph 9, above, gives the overall tasks of intelligence. At different echelons responsibilities will vary, and although these may be changed specifically at any time by a major headquarters for one or more of its component units, the general principle is established below:

(1) Division: At division level little in the way of intelligence operations need be conducted, as most of the necessary information will be supplied by Army/District Hq. Intelligence functions will be limited to:

(a) Combat intelligence as required.

(b) Intelligence of the German Armed Forces, as necessary to assist in carrying out the division responsibility for disarmament and disbandment (see Para 9 a (2), above).

(c) Limited civil intelligence (see Para 9 a (5), above).

- 7 -  
[REDACTED]

UNCLASSIFIED

- (d) Active assistance in the field to officers in charge of disarmament and disbandment operations, in dealing with German commanders and staffs.
- (e) Screening interrogation of prisoners of war for the purpose of selecting those individuals suitable for interrogation at Army/District Hq Interrogation Centers.
- (f) Counter-intelligence security within the perimeters of military reservations.
- (2) Corps: Corps functions will be the same as those as those of divisions. In addition Corps Hq is in the channel from Divisions to Army Hq.
- (3) Army/District Hq: All functions listed in paragraph 9 will be discharged at Army/District Hq level, except for military base censorship, and civil censorship after the Primary Phase, when this function will be controlled by Army Group/Zone Hq.
- (4) Army Group/Zone Hq: All functions listed in paragraph 9 will be discharged at Army Group/Zone Hq level. Army Group/Zone Hq will coordinate policy, etc, and will be the controlling center for receipt and dissemination of intelligence from and to Army/District Hq.

## 12. CENSORSHIP OF CIVIL COMMUNICATIONS IN GERMANY.

- a. Under the provisions of SHAFF Intelligence Directive Number 23, dated 9 January, 1945, Headquarters Twelfth Army Group is charged with the responsibility for the establishment and operation of Censorship control over all civil postal and telecommunications, as well as communications carried by civilian travelers, which enter, leave, pass within, or transit that area of GERMANY occupied by forces under this command.
- b. Civil Censorship will be conducted in accordance with the terms of Circular 2, Headquarters Twelfth Army Group, dated 15 January, 1945.
- c. Concurrent with the military advance into GERMANY and through the Primary Phase, Censorship control will be exercised by the attachment of Advanced Censor Sections to Army Headquarters (G-2 Sections). These Censor Sections may be attached to Corps in the event that civilian communications are re-opened in Corps Zones. These Advanced Censor Sections will be under the operational control of the G-2 of the army or corps to which they are attached. Upon entering the secondary phase of "ECLIPSE", this personnel will revert to the control of the AC of S, G-2, G-2 (Censorship Branch) of Hq, 12 Army Group for use in subsequent static Censorship control.
- d. As consolidation of the U. S. forces in the zone of occupation progresses and as communications for civilian use are again authorized, Civil Censorship will be established under the direct control, operationally, of the AC of S, G-2 (Censorship Branch) of Hq, 12 Army Group. It will be carried out in the field by the several Censorship District Controllers and their Civil Censorship operational staffs. The administration of all censorship personnel, Military and Civilian, will be the responsibility of the command to which they will be attached. Since Censorship District boundaries do not coincide with Military District boundaries personnel will be attached for administration to the Military District from which District Censorship control is directed.

[REDACTED]

13. AERIAL RECONNAISSANCE.

a. VISUAL:

(1) Purpose. To determine where there is unauthorized military movement and to obtain combat intelligence on groups offering armed resistance.

(2) Facilities. The major effort of the two Tactical Reconnaissance Squadrons of the 67th Group will be available.

(3) Method of Employment. If deemed necessary, when operation "ECLIPSE" is placed in effect, areas covering the First Army Zone will be blocked out for visual reconnaissance coverage. It is not contemplated, however that this will be necessary and if not, sufficient planes will be kept on call to fly missions for various requesting units. It is contemplated that approximately 28 missions will be available. Requests for missions to be made to G-2 (Air) First Army at least one hour prior to the time coverage is desired.

b. PHOTOGRAPHIC:

(1) Purpose. To photograph unoccupied areas for the purpose of locating installations or targets and to check the layout of known German installations. To obtain topographic information.

(2) Facilities. The major portion of the 30th Photo Squadron of the 67th Group will be available.

(3) Method of Employment. Photography to be flown upon request to G-2 (Air) First Army.

14. TURNOVER OR TAKEOVER OF TERRITORY. There are important implications to intelligence in the turnover or takeover of territory to or from troops of another nation, in fact a careless change of command might conceivably cause confusion in intelligence matters.

a. In Territory later to be Turned Over.

(1) Policy: When First U.S. Army troops initially take and occupy areas later to be turned over to another nation, the U.S. commanders and intelligence officers should acquaint themselves with the intelligence policy of the nation concerned, and should follow this policy to the extent practicable, as long as it does not conflict with U.S. policy and there is no other good reason to the contrary.

(2) Seizure of Intelligence Targets. Precisely the same emphasis must be laid on the immediate seizure of intelligence targets as in cases where troops are operating in territory which is to become part of the American Zone. After seizure there must follow the same careful surveillance of targets other than personalities to insure that they are turned over intact to exploitation personnel or the relieving troops. Full records must be turned over with all personalities.

b. Taking Over. In taking over territory from troops of another nationality, commanders and intelligence officers, before finally accepting responsibility for the area, should acquaint themselves with the policies and methods that have been followed by the troops being relieved. This is essential in order to give due notice to the Germans of any changes in policies and methods that are to be put in force. Likewise there should be a careful take-over of records, including lists and descriptions of intelligence targets, with the progress of exploitation in each case not a personality, or the arrest report and present status in the case of each personality.

UNCLASSIFIED

15. MAPS

(See Paragraph 13, Annex No. 3)

16. INTELLIGENCE PUBLICATIONS.

a. General Intelligence. SHAEF is performing the bulk of long-term research in operational intelligence. The following is a list of the main intelligence publications distributed by SHAEF and other agencies:

The OK Brief - SHAEF  
The NETHERLAND - SHAEF  
CIOS Black List - SHAEF  
Military Headquarters and Installations in Germany - MID(WD) and DMI(WO)  
Germany Basic Handbook - MEW  
Germany Zone Handbook No. V, RHINE-RUHR - MEW  
Geographical Handbook Series - GERMANY - MID, Admiralty  
Reports on German Cities - ISTD

b. Counterintelligence. The following is a list of the main intelligence publications of counterintelligence interest:

CI Handbook for Germany - SHAEF  
SHAEF Handbook on Policies and Procedures for the Military Occupation of Germany  
Germany Basic Handbook - ABC of German Administration and Public Service - MEW  
SHAEF Handbook for Military Government in Germany  
Germany Zone Handbook No. V, RHINE-RUHR - MEW  
The Exploitation of German Documents - MID(WD)  
SHAEF Public Safety Manual of Procedures, Military Government of Germany  
Germany Basic Handbook - MEW (including MIRS/OCC/CI Publications Nos. 1, 2, 5, 10, 12, 15, 22, 24, 25, 26, 26A, 28, 29, and 31)  
German Intelligence Service - EDS/G/9  
Military Headquarters and Installations in Germany - MID(WD) and DMI(WO)  
Allgemeine SS - EDS/G/8  
The SA of the NSDAP - EDS/G/1  
The RAD - EDS/G/4  
German Concentration Camps - EDS/G/5  
The NSFK of the NSDAP - EDS/G  
The NSKK of the NSDAP - EDS/G  
The FJ of the NSDAP - EDS/G  
Identification of Enemy Sabotage Equipment - War Office  
Germany Zone Handbook No. VI, The Hessen Region - MEW  
Organization of the NSDAP and the German State - First U.S. Army Intelligence Notes No. 25, 31 October, 1944  
First U.S. Army Intelligence Instructions No. 32 - CI Operations in Germany, 14 December, 1944

17. FIRST ARMY SOP.

Current First Army Intelligence Instructions and Section III of First Army SOP dated 1 December, 1944, remain in effect during "ECLIPSE" except where they are in conflict with the provisions of this plan.

18. REPORTS.

As long as corps continue in mobile operations reports will be submitted as required currently. As soon as any given corps assumes the functions of governing its area of occupation this headquarters will authorize the following reports:

- a. Weekly Situation Report
- b. Weekly Counterintelligence Report
- c. Spot Reports of important information

[REDACTED]

UNCLASSIFIED

ANNEX NO 2

INTELLIGENCE PLAN

OPERATION

"ECLIPSE"

HEADQUARTERS FIRST U. S. ARMY  
APO 230

APPENDIX I

TARGET PLAN

[REDACTED]

UNCLASSIFIED

**UNCLASSIFIED**

**APPENDIX**

**TARGET PLAN**

1. General

a. Importance. One of the major intelligence missions under operation "ECLIPSE" will be the seizure and safeguarding of "intelligence targets".

b. Definition. The definition of "Intelligence Targets" will be any person or object which has been of value or which could have been of value to the enemy in prosecuting the war. This will include, for example, libraries, archives, and other documents, as well as persons of technical interest. The range is unlimited from factory to ministry.

c. Target Information and Priorities. Advance information is to be supplied by 12th U.S. Army Group. However, the Army Commander can, upon the discovery of an important target about which no advance information was given, reassign the priority.

d. Exploitation of Outside Agencies. The following is quoted from Par. 1, Appendix I of Annex 2, Operation "ECLIPSE", Headquarters Twelfth Army Group, dated 5 March 1945. This may not be a complete listing of the authorized agencies who will come into the Army area to exploit "Intelligence Targets"; however, it indicates the need for the detail set out in the following paragraphs: "Many targets designated for seizure, especially those of the highest priority, are of such a highly specialized technical or scientific nature that they cannot be exploited by the intelligence staffs of Army Group, Armies, or lower echelons. Many agencies such as CIOS (Combined Intelligence Objectives Sub-Committee of the Combined Intelligence Committee, which represents both United States and British Ministries), Naval Intelligence, SHAEE agencies for Japanese and other special intelligence, Twelfth Army Group Staff Sections and other authorized agencies have delegated field team experts for the exploitation of certain of these targets. In addition to the prompt seizure and safeguarding of intelligence targets, the work of the exploitation of such targets by intelligence teams accredited by higher headquarters must be facilitated through provisions for transportation, quarters, messing, and escorts where necessary, and must be coordinated on the ground. Other types of targets, such as those of counter-intelligence or operational nature, fall within the normal scope of the intelligence staffs and agencies of armies and lower echelons to exploit".

e. Supervision of Outside Agencies. Intelligence Specialists from higher headquarters will be accredited to Army from Army Group. Their activities will be governed by this Annex.

2. Responsibilities.

Due to the importance, number, and dispersion of targets, it is desired that commanders of lower units render all possible assistance in the seizing and safeguarding of intelligence targets. Obvious targets should be immediately held under guard and the Target Branch, this Headquarters notified.

a. It will be the responsibility of corps in their respective zones to:

(1) Seize promptly all First Priority targets, and place them under guard until specifically released by this headquarters.

(2) Seize all Second Priority targets, and place them under guard if practicable. If guards cannot be furnished, targets will be safeguarded to the extent practicable, for instance by patrols, until exploitation is complete.

**UNCLASSIFIED**

**UNCLASSIFIED**

(3) Locate and safeguard Third Priority targets to the extent that is found practicable, until they have been exploited.

(4) Detain persons whose names appear on lists of personalities of interest to CIOS, and any other persons who appear to be in possession of information concerning CIOS targets. Persons listed as being of interest to CIOS will be experts of all kinds, including scientific and research workers, many of whom may be in possession of information which the Germans are particularly anxious to conceal. Great discretion must be exercised in the handling of these experts and adequate precautions to protect them must be taken, both before they have given information and afterwards, but they must not be so handled that various restrictions imposed influence them against cooperating. It will be the responsibility of intelligence staffs to advise whether such persons should remain under detention or be released under restrictions.

### 3. Operations Plan - Primary Phase

a. Target Force, Twelfth Army Group. Target Force, Twelfth Army Group (with one company of Combat Engineers and one regiment of Infantry attached) will:

(1) Seize, guard, and exploit in accordance with Par. 10 basic Annex, and Par. 2 of this Appendix, intelligence and counter-intelligence targets in the RUHR DISTRICT that is: DUESSELDORF (incl) - RHINE River - WESSEL (excl) - HAMM (excl) - ISERHOHN (incl) - REMSCHELD (incl).

(2) Be prepared to operate in FRANKFURT /am/MAIN or such other target area as may be designated by G-2, Twelfth Army Group, in the event that the RUHR district has been already exploited or is for any reason unavailable for Target Force operations on "A" Day.

(3) Target Force will operate as a unit attached to the Army in whose area it is located. If two Armies operate in the RUHR district simultaneously, Target Force will be attached to the First U.S. Army, will come under the operational control of the Army having jurisdiction.

(4) Wherever Target Force operates it will:

(a) Seize, safeguard, and to the limit of its resources, exploit all building targets on the list which will be furnished in advance to the Army in whose zone it operates.

(b) Seize, safeguard, and exploit important targets discovered after its arrival in the district.

(c) Arrest, detain, and turn over to the interested Army, First Priority counter-intelligence personality targets, a complete list having been furnished to Army in advance. Any other persons arrested incidental to its operations will be likewise turned over to Army.

#### b. Armies

(1) Armies will seize, safeguard, and exploit intelligence and counter-intelligence targets in their zones of advance in accordance with Par. 10, basic Annex, and Par. 2, this Appendix. For assistance to be expected from Target Force, Twelfth Army Group, in the RUHR or other selected target area, see Par. 3a above.

(2) First Army will provide one infantry regiment to assist Target Force, Twelfth Army Group, for operations in the RUHR District.

[REDACTED]

(3) The AC of S, G-2, First U.S. Army will request the AC of S, G-3, First U.S. Army for the necessary troops to seize and safeguard intelligence and counter-intelligence targets.

c. Guard Requirements. To assist in planning, a rough estimate is presented in terms of infantry battalions, of troops which will be necessary in terms of guarding First Priority targets in the following areas:

- (1) MUEENSTER - HANNOVER - BRAUNSCHEWIG - Three battalions
- (2) KOBLENZ - WIESBADEN - FRANKFURT/am/MAIN - MAIN - Five battalions.
- (3) KOIN - BONN - KASSEL - MAGDEBURG - Four battalions.

#### 4. Long Term Target Exploitation

a. It is to be expected that the exploitation of targets seized, as well as those discovered, during the Primary Phase of Operations "ECLIPSE", will continue for many months, if not years.

b. It will be necessary for Army Commanders to continue utilizing all available resources in implementing the responsibilities and procedures outlined in this Appendix until the permanent Military District Commanders take over.

#### 5. Procedure at Army

a. This Headquarters will provide billets, messing arrangements, transportation to and from targetsites, and guides, interpreters, or escorts, where necessary for intelligence parties designated by higher authority to exploit targets in Army zones. (It is estimated that during the initial phase there will be approximately ten CIOS teams of six persons each in each Army area who will require transportation. In addition there will be field teams of various other intelligence agencies such as AISOS, Navy, and Air who will have their own transportation.)

b. Intelligence personnel, when properly accredited to First U.S. Army, will have an assigned specific target. They will confine their activity to this target or whatever "lead" is developed from that target. The exception to this will be previously unknown targets overrun by the Army.

c. Interested agencies of this headquarters will be notified of the intentions of the intelligence personnel. The interested agency will be given the opportunity of sending a member of their intelligence teams to the target. It will then be up to the personnel involved to decide on what the disposition of the material will be.

d. Evacuation will be in accordance with Cir. 21, Headquarters of the Chief of Transportation, Com Zone, ETOUSA.

e. Intelligence personnel will be supplied with a standard form on which a report of their findings will be made. One copy of this report will be forwarded to the interested agency at this Headquarters, one to Target Force Branch, Twelfth Army Group, and one for file.

#### 6. Personnel

a. Army Group will provide one Liaison Officer to assist in the interpretation and explanation of target lists and dossiers, as well as to advise in matters concerning the seizure and release of specific targets and in the reception and coordination of intelligence specialists from higher headquarters.



UNCLASSIFIED

b. Army will provide five (5) officers: /

One officer to coordinate and operate the target plan.  
One officer to handle and supervise evacuation of material.  
Three officers to be conducting and field representatives of  
Target Branch.  
Two enlisted clerks.

UNCLASSIFIED

  
A N N E X 2


I N T E L L I G E N C E P L A N

O P E R A T I O N  
E C L I P S E

HEADQUARTERS FIRST UNITED STATES ARMY  
APO 230

A P P E N D I X II

P L A N F O R C O U N T E R I N T E L L I G E N C E



**UNCLASSIFIED**

APPENDIX II

PLAN FOR COUNTERINTELLIGENCE

1. REFERENCE. For details of execution of this Plan, see Intelligence Instructions No. 32, this Headquarters, 14 December 1944 and "Counter Intelligence (CI) Directive for GERMANY", Twelfth Army Group, to be published at a later date.

2. MISSION. The CI mission of our forces in GERMANY is:

a. To provide maximum security for our military interests against espionage, sabotage, and subversive activities.

b. To destroy the enemy secret intelligence services, all security or secret police, and affiliated para-military organizations.

c. To dissolve the Nazi Party (NSDAP) and its affiliates and to prevent their rebirth in any form.

d. To aid in the disposal of the German General Staff Corps, including equivalent Air Force and Naval officers.

3. RESPONSIBILITY.

a. Within the areas of their commands in GERMANY, Corps Commanders are responsible for the accomplishment of the CI mission, and will discharge this responsibility pursuant to these instructions and the instructions contained in the detailed directive cited in paragraph 1 above.

b. During the stages of "ECLIPSE" while mobile operations are still in progress, CI operations will consist principally of two types, which will be carried out concurrently by the Corps Commanders concerned, as follows:

(1) Maintenance of a CI organization to conduct tactical CI operations.

(2) Progressive establishment of static CI coverage of areas as conquered.

4. INFORMATION.

a. This headquarters will supply Corps Commanders with all available CI information. The information upon which CI operations will be based initially consists, in general, of:

(1) Publications pertaining to the main administrative and intelligence machinery of the Nazi state and its auxiliary organizations.

(2) Lists, by geographical area, of known or suspect members of the enemy secret intelligence services, secret and security police, and affiliated para-military organizations, and other persons of CI interest.

(3) A listing of headquarters, training centers, and other establishments of CI interest.

b. Army/Military District and Corps Commanders will collect additional CI information through field operations including the interrogation of arrestees, ordinary civilians, and PW's, the operation of informant systems, the use of undercover agents, and the examination of captured documents.

**RESTRICTED**

~~UNCLASSIFIED~~

5. CIC EMPLOYMENT

a. At a time to be announced, Headquarters Twelfth Army Group will activate a single CIC Detachment, hereinafter referred to as the "Occupation Detachment" which will be organized into CIC Teams. Personnel for the Detachment will be made available by the simultaneous inactivation of certain existing Detachments and portions of Detachments, for example, by the withdrawal and inactivation of CIC Teams, type B-2, from divisions.

b. Detachments remaining with units will accompany them in the event they leave this theater. However, all officers and enlisted CIC personnel who possess particular qualifications of value in this theater will be transferred into the Occupation Detachment prior to the departure of these units.

c. The amount of personnel from this Occupation Detachment which will be available to this army is unknown at this time but it is believed that First U.S. Army will be allotted no additional CIC personnel beyond that now available in tactical and reserve teams.

d. Corps will plan the counterintelligence coverage of their zones of interest "A" Day on the basis of the CIC resources which they normally possess in the corps and its divisions. Division CIC Detachments will be employed for town and area coverage in such a way that when type B-2 CIC Teams from each division are transferred to the Occupational Detachment they will be able to continue work in place and will provide the best possible coverage for the area should the corps and/or divisions be transferred out of the area leaving only the Occupation Detachment personnel.

e. In addition to the CIC personnel inherent in the corps and divisions, this headquarters will initially make available two type B-3 CIC Teams to VII Corps and will assume complete responsibility for CIC coverage of the city of Koblenz. The teams furnished VII Corps will become part of the Occupation Detachment.

f. The territorial disposition by Corps of personnel from the Occupation Detachment will be subject to the approval of the AC of S, G-2, this headquarters.

g. CIC will continue to operate under the present SOP for CIC, published by this headquarters. CIC personnel from the Occupation Detachment will be responsible operationally to the AC of S, G-2 of the area in which they are operating. However, routine administration matters will be handled directly between the Occupation Detachment and Headquarters Twelfth Army Group.

6. BASIC PRINCIPLES.

a. Every effort will be made to contain within GERMANY all persons of CI interest.

b. The security of military interests will take priority over the welfare and convenience of the enemy civilian population.

c. Initially CI personnel will search for those "wanted" individuals who are immediate security threats. When conditions permit, positive action will be taken by CI personnel to apprehend other persons of CI interest who remain at large.

d. Evidence gathered against persons of CI interest, whether captured or not, will be collected and maintained in accordance with procedures which will insure the maximum value of the evidence and its admissibility in court.

[REDACTED]

e. Before trial, the burden of proof as to identity and innocence will be placed upon the arrestee.

f. Upon capture by any agency, all known or suspect spies, saboteurs, and subverters, and all persons belonging to or associated in any manner with the enemy secret intelligence services, security or secret police, or para-military organizations, will be referred to CI for investigation.

g. Corps Commanders upon relief by other units will deliver promptly all CI internees and arrestees and all CI records and information pertinent to the area, to the appropriate relieving authorities.

h. As a matter of policy, CI personnel will not be used in the apprehension or investigation of war criminals in whom there is no CI interest.

#### 7. INTERNAL SECURITY CONTROL.

All commanders will continue to be responsible for devising and implementing within their commands all measures necessary to frustrate the efforts of enemy intelligence, sabotage, and subversive agencies.

a. All personnel will be thoroughly instructed in the fundamentals of individual security discipline, and the non-fraternization policy will be enforced strictly.

b. Maintenance of adequate interior guard systems, supplemented by patrolling and the use of obstacles, is essential to internal security control.

c. Particular attention will be given the guarding of surrendered arms, ammunition and explosives in order that civilians or soldier "hold-outs" may not have access to such stocks for sabotage or resistance purposes.

d. All measures necessary for the safeguarding of classified material will be implemented and continually checked for effectiveness.

#### 8. CIVIL SECURITY CONTROL.

a. Army/Military District Commanders will enforce within the civil population all measures necessary to nullify the efforts of enemy intelligence, sabotage, and subversive agencies. These measures will be imposed in the form of Military Government Security Enactments, many of which are now prepared for promulgation. Additional measures will be devised and imposed as needed.

b. Civil Security Control is initially a Military Government responsibility. Commanders are enjoined to conserve the limited CI resources by their employment only in those cases where specialist personnel are required. This injunction is stressed particularly in those cases involving the "screening" of large numbers of civilians such as displaced persons, or the enforcement of routine regulations.

c. Civilian circulation in areas in which Wehrmacht personnel are concentrated for disbandment will be severely controlled. Intercourse and communication between civilians and German armed forces will be forbidden until further instructions are issued.

#### 9. FRONTIER SECURITY CONTROL.

a. Frontier Security Control is a responsibility of this or higher headquarters in whose zone of operations any part of the borders of GERMANY,

UNCLASSIFIED

as of 1937, is located. It is an integral part of "Frontier Control" in the broad sense. To assist in Frontier Security Control a "Prohibited Zone", paralleling and adjacent to the frontier and extending approximately 5 kilometers into German territory, will be established; the inner line of the Prohibited Zone may be varied to conform to natural barriers or to avoid the evacuation of large centers of population. The object of Frontier Security Control is to "seal off" GERMANY in order to:

(1) Confine within GERMANY all individuals who are objectionable from the CI point of view. This includes all persons in the categories prescribed for arrest.

(2) Confine within GERMANY all war criminals and any other "wanted" persons.

(3) Prevent all movement into and out of GERMANY of persons, communications, funds, or property, designed to further Naziism or German militarism.

b. Frontier Control in the broad sense will be executed by troops under such systems of command as may be set up by this headquarters. Troops will furnish the necessary guards and patrols. Military Government will assist. The checks carried out by CI personnel in conjunction with Frontier Control, constitute Frontier Security Control. CIC personnel involved will be part of the Occupation Detachment and will be under the direction of this headquarters.

#### 10. TRAVEL SECURITY CONTROL.

a. Travel Permits. SHAEF will issue all Travel Permits authorizing travel into and out of GERMANY. Headquarters Twelfth Army Group (Chief CIB, G-2 Section) will authorize the travel of civilians leaving GERMANY for intelligence or CI persons, under the waybill procedure.

b. Control of Travel by Air. Security measures similar to those applied at posts controlling land travel across the German frontier will be effected by Corps Commanders at all airfields used for flights into and out of GERMANY.

#### 11. DISSOLUTION OF THE NSDAP.

Corps Commanders will dissolve the NSDAP and its associated secret intelligence services, secret and security police, and para-military organizations, and will arrest, investigate, and detain all members who are proscribed for arrest. Active steps will be taken to insure that the Nazi Party does not live on underground nor in disguised form after its official dissolution.

a. MG Law No. 5, entitled "Dissolution of the Nazi Party", is the instrument which declares the illegality, prohibits the activities, and orders the dissolution of the NSDAP and all officers, organizations, and institutions enumerated by the law.

b. The dissolution of the NSDAP and its subsidiary organizations is a primary mission.

c. The categories of persons proscribed for arrest and detention are enumerated in Intelligence Instructions No. 32, this headquarters, 14 December 1944. For GERMANY and AUSTRIA, these categories total approximately 360,000 individuals. It is estimated for planning purposes that 25,000 individuals will be interned in the First U.S. Army District.

[REDACTED]

## 12. DISPOSAL OF THE GENERAL STAFF.

a. As one of the most important steps in the elimination of German militarism, the officers of the General Staff Corps, with all equivalent Air Force and Naval officers, must be so disposed in post-war GERMANY that they can take no part in any attempts to revive military GERMANY. These men are important in that they have the knowledge and experience of this War, and would therefore be the most efficient organizers of the next. They must be placed in such a position, interned if necessary, that they cannot use their abilities in connection with any undesirable activity. A factor in their surveillance will be denial of access to military records. These must be put safely out of their reach by destruction or evacuation from GERMANY (see Appendix IV, this Annex).

b. CI agencies will take custody of all General Staff Officers who have not already been apprehended as prisoners of war, or among PW's, those who are of CI interest, are listed as war criminals, or who are regarded as potentially dangerous.

c. The task of disposal of the General Staff cannot be left to CI agencies alone, however. The close attention of all commanders having to do with disarmament and disbandment will be needed, particularly since many of the German officers concerned will be required to remain in their old positions as key personnel, until finally dismissed when their services are no longer required by the Allied authorities. In the end, specific command decisions will be required in almost every individual case as to future disposition, although CI machinery can take care of those officers in CI custody. Directives will be issued in future by this headquarters to assist in the rendition of decisions.

## 13. PROCESSING OF CI ARRESTEES.

The arrest and internment of all persons whose continued liberty is likely to constitute a threat to our security or to the accomplishment of the mission of the US occupying forces, is a command responsibility. In carrying out this responsibility any and all personnel may be employed, but in cases of CI interest it will be accomplished primarily through the operations of CI personnel. All CI cases will be handled as described below, regardless of what individual or agency makes the initial arrest.

a. Evidence. The persons and premises of all CI arrestees will be searched, and care will be taken to ensure the chain of possession of all items confiscated as evidence.

b. Initial Disposition. CI arrestees will be processed initially as follows:

(1) Known or suspect members of the enemy secret intelligence services, and persons detected in acts of espionage, sabotage, or subversion, or found in possession of sabotage equipment, secret writing materials, codes or communication devices, or in other suspicious circumstances, will be evacuated to the CI Annex of the Army/Military District Interrogation Center.

(2) Persons arrested because of their rank or position but not falling in the category described in (1), above, will be evacuated to Internment Camps. An example of such a person would be one who held an office in the government, the incumbent of which was prescribed for arrest.

(3) Other security suspects will be processed according to the merits of the individual case.

~~UNCLASSIFIED~~  
[REDACTED]

c. Places of Detention. Arrestees will be detained by CI agencies or those coordinated with CI, in available facilities or in one of the following:

(1) Detention Camps. In areas where adequate civilian jailing facilities are not available, Corps Commanders will provide detention camps where arrestees may be held up to ten days pending the completion of preliminary investigation, and prior to the evacuation of arrestees to Internment Camps or Army/Military District Interrogation Centers.

(2) Internment Camps. One or more internment camps will be established by the Army/Military District Commander as prescribed in Annex No. 5. Each of these camps will house from 6,000 to 10,000 persons.

a. CI Staff. A CI Staff will be provided at each Internment Camp, for the processing of CI internees as provided in directives from higher headquarters. This consists mainly of completion of documentation as described below, but will consist in addition, of such interrogation as is required to complete investigation of each case, and to recommend those individuals worthy of detailed questioning at the Army/Military District Interrogation Center.

(3) Interrogation Centers. (see Appendix V, this Annex).

Internees will be kept at Interrogation Centers during interrogation. After completion of interrogation they will be returned to Internment Camps. Those arrestees who are initially transferred to Interrogation Centers will be processed in accordance with the results of interrogation.

d. Army/Military District Commanders will establish review boards to review tri-monthly the cases of internees. The review boards will include appropriate representation from CI, MG, and other interested agencies, and will recommend the trial, release, provisional release or continued internment of the individuals whose cases are reviewed.

e. In disbanding the Wehrmacht, Corps Commanders will insure that members of the SD, Gestapo and other intelligence and police organizations who may attempt to pass themselves off as members of the Wehrmacht are not discharged but are held for interrogation and internment.

14. SEIZURE AND EXPLOITATION OF CI TARGETS.

CI and other personnel will participate in the seizure of intelligence targets as discussed in paragraph 10, basic Annex, and in Appendix I.

a. Personality Targets. Persons who are intelligence targets of interest to CI will be processed as described in paragraph 13 above. As a general rule, CI interest will take priority over other interest, since untrustworthy individuals must be held in custody. However, when a certain individual has information of value to other agencies, CI will facilitate interrogation by such agencies.

b. Targets Other than Personalities. These targets, such as buildings or premises, will be seized as described in paragraph 10, basic Annex, and in Appendix I. Documents and materiel will be safeguarded in place, and the appropriate CI authority notified to permit CI examination thereof (for further details relative to documents, see Appendix IV, this Annex). Any evidence of torture instruments or methods, together with the names and testimony of witnesses, will be made available to the appropriate G-1.

c. CI Documents. Documents of interest to CI must be preserved and exploited on the principle that other agencies may be interested as well.

~~UNCLASSIFIED~~

[REDACTED]



[REDACTED]

The procedure outlined in Appendix IV, this Annex, will be followed. Paragraph 1.b.(5) of that Appendix does grant authority for special handling of CI documents in certain cases.

15. CI RESPONSIBILITY OF NAVAL AND AIR FORCES.

a. Naval. Naval Forces will have no CI responsibility in connection with the American Zone.

b. Air. CI responsibility of the Air Forces is limited to the immediate confines of air installations, and will deal with internal and air travel security control only. Where it is necessary to pursue CI investigations beyond the limits of air reservations, coordination with the local Ground Forces CI authority is required.

16. RECORDS.

a. Personality Index. Army/Military District Commanders will maintain their copies of the SHAEF Personality Card Index for GERMANY. Supplementary information to be recorded on these cards, as well as additional cards, will be supplied by this headquarters.


b. Rosters of Personalities. Headquarters Twelfth Army Group (G-2, CIB), will supply Machine Records Unit Rosters of "Wanted" persons, CI arrestees, and other information pertaining thereto. Requests for such rosters should be made through G-2 channels to the AC of S, G-2 this headquarters.

c. Files. Corps Commanders are not required to maintain permanent files or dossiers pertaining to individual arrestees. Headquarters Twelfth Army Group will be the central repository for all such files and records.

17. REPORTS. Corps Commanders will submit a "Weekly CIC Report" in the form prescribed in First U.S. Army CIC SOP, 12 December 1944.

[REDACTED]

**UNCLASSIFIED**

  
ANNEX NO 2

UNCLASSIFIED

INTELLIGENCE PLAN


OPERATION

"ECLIPSE"

HEADQUARTERS FIRST U. S. ARMY  
APO 230

APPENDIX NO III

PLAN FOR INTELLIGENCE PERSONNEL

  
UNCLASSIFIED

PLAN FOR INTELLIGENCE PERSONNEL

I, REDISPOSITION OF INTELLIGENCE  
SPECIALIST TEAMS

1. GENERAL.

a. Primary Phase. During the Primary Phase, except as some units assume static functions, the present attachment of intelligence specialist teams will not be disturbed. In the case of those units which have become static, adjustments will be made under the direction of this headquarters to begin the transition to the Secondary Phase.

b. Secondary Phase. During the Secondary Phase, intelligence specialist personnel will be redispensed as indicated below.

2. AVAILABILITY.

a. All IPW and MII personnel will remain available for use in this Theater (see par 3 and 4 below).

b. PI Teams attached to units leaving the Theater will accompany them. Others will remain for use in the Theater (see par 5 below).

c. OB Teams will remain attached to their present units, including those which leave the Theater.

3. IPW TEAMS.

During the Secondary Phase, IPW Teams will be withdrawn progressively from units as required by this headquarters for the establishment of Army/Military District Interrogation Center and Documents Center. The ultimate basis of allotment will be one IPW team for each Corps and each Division. Utilization of IPW Teams withdrawal from Corps and Divisions is described in Appendix V this Annex. Teams relieved from units and not required for interrogation centers and document centers will be employed for CI purposes.

4. MII TEAMS.

MII Teams will be withdrawn progressively from units for utilization as required by Twelfth Army Group. The bulk of this personnel will be re-attached to this headquarters and Corps to supplement CI agencies.

5. PI TEAMS.

PI Teams will be withdrawn from units except teams attached to units earmarked for departure from the Theater. Two teams will remain attached to this headquarters. PI personnel, not otherwise utilized, will be held in a pool at the disposal of Twelfth Army Group to be utilized as demanded by the situation.

6. DOCUMENTS SECTION.

An Army Documents Section will be incorporated into Army/Military District Documents Center as described in Appendix IV, this Annex.

7. PRIORITY OF RELEASE.

Specialist teams will be released from attachment to present units in the following order of priority:

~~UNCLASSIFIED~~

- a. First Priority - I Teams (excluding teams attached to units earmarked for departure from this Theater).
- b. Second Priority - IPW Teams.
- c. Third Priority - MII Teams.

UNCLASSIFIED

~~\_\_\_\_\_~~

[REDACTED]

A N N E X 2

I N T E L L I G E N C E P L A N

O P E R A T I O N

E C L I P S E

HEADQUARTERS FIRST UNITED STATES ARMY  
APO 230

A P P E N D I X I V

H A N D L I N G O F E N E M Y D O C U M E N T S

UNCLASSIFIED

[REDACTED]

[REDACTED]

HANDLING OF ENEMY DOCUMENTS

1. GENERAL

**UNCLASSIFIED**

- a. Document Center. The Army/Military District Headquarters will operate a Document Center under the supervision of the G-2 Section. The Document Center will assume the administration of all documents found in the District and coordinate and facilitate the activities of visiting agencies in search of documents.
- b. Existing Document Section. Until Army/Military District HQ has been established, the existing Army Document Section, augmented by additional personnel from higher headquarters, will continue to operate and insure the flow of documents of operational intelligence value through the established document channels. As soon as Army/Military District Headquarters move into their final location, the personnel of the Army Document Section will join the Document Center.
- c. Corps Document Sections. On "A" Day each Corps will transfer two IPW teams, whose personnel will be part of the T/O of Army/District HQ Document Center, into a Corps Document Section to function as part of and in cooperation with the Army Document Center in the Corps area. Mission of the Corps Document Section will be to carry out provisions of par. 1 a, b, and c of this appendix in the Corps Area. Additional personnel at Army/District HQ Document Center will be available to Corps Document Sections for specific targets.
- d. Document Control Section. There will be a Document Control Section located at Army Group/Zone Headquarters to supervise and coordinate the functioning of the Army/District Headquarters Document Centers and to assist with such work as mimeographing and photographic printing. The Control Section will also serve as the channel between Army/Military District Document Centers and higher headquarters.

2. DISPOSITION OF DOCUMENTS.

a. Basic Principle. Only such documents as require exploitation at higher headquarters will be evacuated. The general rule will be that documents will be left in place or collected in central repositories unless evacuation is essential. All documents evacuated with the exception of those mentioned in para. 2.b.(3) (a, b, d) and 2.b. (6) below, will be evacuated through the Army/District HQ Documents Center.

b. Rules on Disposition. The following guiding principles are established.

- (1) Documents required locally for military government purposes will be left in place. This applies especially to documents relating to the operation of public utilities.
- (2) Archives and libraries will be left intact, and if any single documents are removed therefrom their return must be insured.
- (3) The following are examples of documents deserving special consideration as to disposition:

- (a) Documents of operational value (i.e., required for the cleanup of pockets of resistance or of guerillas, and for disarmament and disbandment) will be processed immediately through the nearest G-2 Section.
- (b) Documents of counterintelligence interest will be processed immediately through the nearest CIC detachment or G-2 Section.
- (c) Documents required by CIOS (Combined Intelligence Objective Subcommittee of the War Department and War Office) and similar agen-

**UNCLASSIFIED**

UNCLASSIFIED

cies will be specially marked for these agencies and processed either by the agencies themselves or other documents personnel, through the Army/Military District HQ Document Center. These agencies will have special teams operating in the Army area and will determine the type of documents which they require.

(d) Cryptographic material required by signal intelligence will be turned over to the nearest Signal Intelligence officer.

(4) Military and other documents which, if permitted to fall back in the hands of the Germans might form a basis for overt or underground attempts to reconstruct the GERMAN Armed Forces, will be evacuated through document channels.

(5) Counterintelligence may, if desirable, freeze any document of purely CI interest so that it is not shown to any other agency without permission. This measure will be taken only on the authorization of the Corps or Army G-2 concerned, and the Army Document Center will be informed of such action.

(6) Documents which are solely of interest to the Navy or Air Force will be turned over in place to the nearest Navy or Air Force intelligence staff, or if this is impracticable a report on these documents will be sent to Army/District HQ Document Center. Documents that are of interest to the ground forces as well will be held by the Document Center, but Navy or Air Force will be given an opportunity of inspecting and copying the documents.

(7) The AC of S, G-2, Corps or Army, may in certain exceptional cases, issue specific directives for handling documents through special channels. This will not, usually involve any great bulk of documents, and the Army Document Center will be fully informed of the provisions of the directive.

c. Safeguarding of Repositories. Corps will insure that in the area of their advance all repositories specifically designated by interested agencies are secured as soon as captured, and that a report on their location is promptly transmitted to the Army G-2. Securing will be effected by sealing the rooms or buildings containing the documents, and guards will be posted wherever practicable. The repositories will remain guarded or sealed until authorized document personnel takes custody. It will be borne in mind that the securing of intelligence targets is a command responsibility; therefore, every effort will be made to provide guard details from reserve troops.

### 3. PROCEDURE GOVERNING AGENCIES IN SEARCH OF DOCUMENTS.

a. Definition. It is anticipated that many different agencies will be interested in inspecting document repositories and will wish to remove documents to higher headquarters for detailed study. The term "Agency" as used herein includes any individuals, teams or units originating from outside the Army/Military District Command.

b. Control over Agencies. To insure that no documents are taken away by one agency that may be desired by others also, Military District Command will exercise strict control over visiting agencies by enforcing the provisions of the following paragraphs.

(1) Registration of Agencies. All agencies wishing to operate in a Military District will be required to accomplish proper registration and clearance with successive headquarters.

(2) Control of Document Center. In addition, any agencies wishing to examine document repositories will register with and operate through the facilities of the Army Document Center. They will conform to the Standing Operating Procedure laid down by the Document Center, and will employ such forms and render such reports as the Document Center may require for the proper performance of its functions.

[REDACTED]

c. Duplication of Documents. Agencies may request permission to duplicate documents in place. Microfilming assistance may be applied for at the Document Center.

d. Evacuation of Documents. Any agency wishing to evacuate documents for exploitation at higher levels, will submit a request to the Document Center which, if the documents can be released, will forward them through established document channels to the addressee designated by the agency.

#### 4. FUNCTIONS OF ARMY DOCUMENT CENTER.

a. Purpose. The Army Document Center will serve as a control agency for insuring coordinated exploitation of all documentary resources in the District by interested agencies.

b. Location. The Army Document Center will be located as near as possible to the District Headquarters.

c. Initial Document Survey. Immediately after establishment of a Document Center, the personnel thereof, including members of the Corps Document Sections, will survey the entire area of the District for the location of document repositories and will make a cursory inventory of the kind and amount of documents found. They will decide whether the documents should be:

- (1) Left in place.
- (2) Collected and deposited at a storage place other than the Document Center Library.
- (3) Incorporated into the library of the Document Center.
- (4) Evacuated through military channels.
- (5) Destroyed.

d. Records. Progressively more detailed records will be compiled on documents in the district, including their disposition or whereabouts.

e. Location Lists. Catalogs giving location of documents and as much detail as possible will be prepared and circulated to interested agencies within the area.

f. Visiting Agencies. The Document Center will be in full control of all visiting agencies interested in examining document repositories. It will keep a record of these visits, advise the agencies as to available sources and approve or disapprove the removal of documents by these agencies.

g. Duplication. The Document Center will establish priorities on duplication requirements of visiting agencies and assist with microfilming where possible.

h. Relations with Staff and Commands. The Army Document Center and Corps Document Sections will furnish information or make appropriate documents available, as required by G-2. All staff sections and commands of the Army/Military District should keep the Document Center informed through G-2 of specific types of information desired. In priority cases approved by G-2, the Document Center will render active assistance, such as making translations or extracts, to staff sections and commands and in finding particular documents, types of documents, or information.



**UNCLASSIFIED**

A N N E X 2

I N T E L L I G E N C E P L A N

O P E R A T I O N

E C L I P S E

HEADQUARTERS FIRST UNITED STATES ARMY  
APO 230

A P P E N D I X V

P L A N F O R I N T E R R O G A T I O N

**UNCLASSIFIED**

**UNCLASSIFIED**

APPENDIX NO. V  
PLAN FOR INTERROGATION

1. Introduction.

a. Methods and procedure of interrogation for the purpose of obtaining intelligence will differ in the two distinct phases of Operation "ECLIPSE":

(1) Primary Phase. Normal requirements of mobile operations and tactical methods of interrogation will apply in general during the Primary Phase. Certain units and rear areas may assume a static occupational role during this Phase, and will undertake a progressive reorganization from the tactical to the static requirements of intelligence interrogation.

(2) Secondary Phase. The reorganization of interrogation personnel and facilities will be undertaken for the purpose of meeting the static, long-range requirements of the occupation of Germany. This reorganization will be effected upon orders from this headquarters as units assume occupation duties, and will be completed at an early stage during the Secondary Phase.

b. Many thousands of individuals will be interrogated during the occupation of Germany, and a large number of agencies will be concerned with the collection of intelligence through interrogation. Among the subjects to be covered by interrogation are: counterintelligence data, Military Government requirements, technical and scientific research on the German war effort, Order of Battle and personality information for historical purposes, industrial data and preparation of cases for the prosecution of war criminals. The task is a huge one, but will have an advantage over the present tactical situation in that more time may be expended on the collection of information.

2. Types of Persons to be Interrogated. Every resident of Germany is a potential source of information; this plan, therefore, sets up a method of selection whereby only the more important individuals with information of positive value to offer will be interrogated in detail. The information so obtained will be disseminated to all interested agencies. When a staff section or another agency is concerned with only a fraction of the information furnished by an individual, this pertinent data will be extracted from the detailed interrogation report and furnished to the interested agency. Types of persons to be interrogated, of both sexes, will fall into two general categories:

a. Those with personal guilt, who must be arrested, guarded and specially handled during interrogation. They will be interrogated to obtain general information, as well as to establish evidence against themselves or others:

- (1) Persons of counterintelligence significance.
- (2) War criminals.

b. Those without personal guilt; these individuals are not of interest in themselves to our authorities, but may have information of special or general interest or which can be used as evidence against others:

- (1) Prisoners of War.
- (2) Ordinary civilians.

3. Stages of Interrogation. In order to select the more important individuals for detailed interrogation, the following stages of interrogation will be established:

a. Field Interrogations. By this is meant those interrogations performed other than at the detailed Interrogation Center described in paragraph 3b, below. The field interrogators will gather much of the general information and assist in the selection of individuals who warrant detailed interrogation. In general, no reports of field interrogations need be submitted except as follows:

**UNCLASSIFIED**

[REDACTED]

(1) Extracts of field interrogation reports which contain special or general information of interest to staff sections or other agencies, as mentioned in paragraph 1b, above, will be submitted to the appropriate AC of S, G-2 by the field interrogators for dissemination. Although personal source data need be included to permit evaluation of the information, field interrogators will be advised through G-2 channels as to the form and types of reports as prescribed by this headquarters.

(2) Field interrogation reports and recommendations will be furnished in duplicate to the AC of S, G-2, this headquarters, on all persons considered worthy of detailed interrogation. This does not apply to known or suspect members of the German intelligence services arrested by the Counter Intelligence Corps who are transferred to the detailed Interrogation Center immediately upon completion of local investigation, as prescribed in paragraph 3b(2)(a), below.

(a) These instructions are not to be taken as limiting the authority of Corps and Division Commanders to require such detailed reports of field interrogations as they desire; copies of such reports need not be furnished above the headquarters which requests them, unless they are considered of interest to higher headquarters.

(b) Counterintelligence field interrogations will be conducted by the Counter Intelligence Corps. On cases other than known or suspect members of the German intelligence services, reports of field interrogations need not be furnished to higher headquarters or to the detailed Interrogation Center unless the CIC Detachment feels they are sufficiently important to warrant dissemination or check against central counterintelligence records maintained by the AC of S, G-2, this headquarters. When an individual is sent back to the Interrogation Center for detailed interrogation, however, copies of all relevant reports will accompany him.

(c) Positive intelligence field interrogations will be conducted by such Field Interrogation teams or units as may be organized from IPW, MII and other intelligence teams. Reports of field interrogations of positive intelligence need be submitted through proper channels only to the staff section or agency requesting the information, except when this is of such a nature that higher headquarters would normally be interested. If any individual, other than a counterintelligence case, is transferred to the Interrogation Center for detailed interrogation, he will be accompanied by all pertinent field reports.

b. Detailed Interrogation. Detailed interrogation will be conducted at two levels: Army/Military District and Army Group/Zone. The Detailed Interrogation Center maintained by Army/Military District under the supervision of the AC of S, G-2, will conduct detailed interrogation of individuals recommended by field interrogators, as described above. It will prepare for the AC of S, G-2, all interrogation reports, complete or extract copies, of interest to higher headquarters, other staff sections and the various interested agencies. Two general categories of individuals will be transferred to the Interrogation Center for detailed interrogation:

(1) Those without personal guilt, to be interrogated for general information.

(a) The Interrogation Center will receive recommendations from the Field Interrogators, submitted through G-2 channels, and will select individuals for detailed interrogation on the basis of directives formulated by the AC of S, G-2. These directives will incorporate requests for specific information received from other staff sections and interested agencies.

(b) Where agencies or staff sections other than G-2 desire that certain individuals be interrogated in detail, they will apply to the AC of S, G-2, this headquarters, for permission to transfer these individuals to the Interrogation Center.

~~SECRET~~

In these cases, the interested section should furnish specially trained technical interrogators or experts to conduct the interrogation; these interrogators will be permitted every facility of the Interrogation Center. Should it be impossible to furnish specially trained interrogators, the section or agency concerned should provide either: (a) a detailed description of the type of information it wishes to obtain, as well as pertinent reference material; or (b) a representative to sit in on the interrogation as an adviser.

**UNCLASSIFIED**

(c) Individuals of this non-suspect type will not be held at the Interrogation Center as detainees, and every effort should be made to expedite the interrogation and treat them as voluntary informants, which they will frequently be. In any event, they will not be detained together with suspect or counterintelligence arrestees. In the case of a non-suspect individual, who is at the same time a Prisoner of War, he will be detained together with the suspect cases, but his interrogation will be expedited in order to return him promptly to normal Prisoner of War channels.

(2) Those with personal guilt, known or suspect counterintelligence cases and war criminals, will be transferred to the detailed Interrogation Center in one of two ways:

(a) Known or suspect members of the German intelligence services and undercover organizations, to include persons detected in acts of espionage, sabotage or subversion, and persons found in possession of sabotage equipment, secret writing materials, codes or communications devices, or in other suspicious circumstances, who are apprehended in the field, will be turned over to the nearest CIC Detachment for actual arrest. This CIC Detachment will conduct the necessary local investigation and field interrogation. Except in the cases of known or strongly suspect members of the German intelligence services who are to be delivered directly and as rapidly as possible after local investigation to the Detailed Interrogation Center, Corps CIC Detachments may retain custody of suspects for the purpose of field interrogation for a period not to exceed ten days. This type of counterintelligence field interrogation will be conducted at an Interrogation Center maintained by Corps, of such size and organization as the Corps Commander may direct, with CIC and other intelligence team personnel as is deemed necessary. Upon transfer of the arrestee to the detailed Interrogation Center from the arresting CIC Detachment or a Corps Interrogation Center, he will be accompanied by all pertinent records and reports.

(b) Other persons of counterintelligence interest, in the custody of Internment Camps or elsewhere, will be reported to the AC of S, G-2, this headquarters, who will select from them certain individuals to be sent to the detailed Interrogation Center. This selection will be based on recommendations submitted to the AC of S, G-2, this headquarters, by CIC Detachments and Field Interrogators operating at Internment Camps and similar installations.

#### 4. Coordination of Interrogation Center Activities.

a. Army Group/Zone will maintain an Interrogation Center for the detailed interrogation of highly selected individuals. It is contemplated that the Army Group/Zone Center will carry much of the load of interrogations conducted for agencies exterior to the American Zone. The Army Interrogation Center will, therefore, through the AC of S, G-2, this headquarters:

(1) Supply copies of individual interrogation reports as a matter of routine to the AC of S, G-2, Army Group and to Army Group/Zone Interrogation Center. Counterintelligence cases will normally be fully reported to higher headquarters within nine days after arrival of the suspect at the Army detailed Interrogation Center.

~~SECRET~~

**UNCLASSIFIED**

~~UNCLASSIFIED~~

On cases of special importance, every effort will be made to submit a full report to AC of S, G-2, Army group and the Army Group/Zone Interrogation Center, as expeditiously as possible.

(2) Make specific recommendation regarding those counterintelligence or suspect cases which require or warrant continued interrogation at a higher level, and request authority to transfer cases of particular importance to the Army Group/Zone Interrogation Center.

(3) Submit recommendations with the least possible delay to the AC of S, G-2, Army Group and Army Group/Zone Interrogation Center for the continued detailed interrogation of non-suspect informants. Full reports of interrogation, together with reports on distribution already made of certain technical extracts, will be submitted to higher headquarters.

b. All "visiting agencies", that is, agencies exterior to the American Zone, desiring to conduct interrogations must clear through the AC of S, G-2, Army Group/Zone and the AC of S, G-2, this headquarters, who will advise the AC of S, G-2, Corps of any agency visiting the latter's area. Such agencies may then conduct field interrogations as desired within the limits prescribed by the G-2 concerned, who may direct that copies of reports be furnished his office. Visiting agencies may avail themselves of the facilities of the Army Interrogation Center.

c. In addition to the individual interrogation reports submitted to the AC of S, G-2, Army Group/Zone and the Army Group/Zone Interrogation Center, the following dissemination of information will be made by the Army Interrogation Center:

(1) Full reports will be submitted to the AC of S, G-2, this headquarters, on all cases of intelligence or counterintelligence value. Full reports will also be furnished the appropriate staff section on cases requiring or warranting prosecution for violation of Military Government ordinances, war criminal acts, espionage or sabotage and similar cases.

(2) Summary Interrogation Reports will be submitted on all cases of interest to other staff sections for clearance or use of a given individual, informant cases, etc.

(3) Extracts from Interrogation Reports on technical and other matters of interest to special staff sections will be submitted to the appropriate section or agency, together with sufficient personal data on the informant to evaluate the report.

(4) General studies and reports based on various interrogations will be prepared from time to time and forwarded through channels to higher headquarters, lateral and subordinate headquarters and other interested agencies.

#### 5. Specifications for Interrogation Center.

a. Organization: Inclosure No. 1 to Annex No. 2, First Draft Intelligence Plan Operation "ECLIPSE", Hq. Twelfth Army Group, 27 February 1945, Appendix No. V, Plan for Interrogation, will apply.

b. Physical Requirements: Requirements as established in the forthcoming Counterintelligence Directive on Operations in Germany, Twelfth Army Group, will apply.

~~TOP SECRET~~  
U N C L A S S I F I E D

A N N E X 2

I N T E L L I G E N C E P L A N

O P E R A T I O N

E C L I P S E

HEADQUARTERS FIRST UNITED STATES ARMY  
APO 230

A P P E N D I X V I

P L A N F O R " D " S E C T I O N

~~TOP SECRET~~  
U N C L A S S I F I E D  
~~TOP SECRET~~

**UNCLASSIFIED**

APPENDIX VI

PLAN FOR "D" SECTION  
(DESTRUCTION OF OCCUPATIONAL TARGETS)

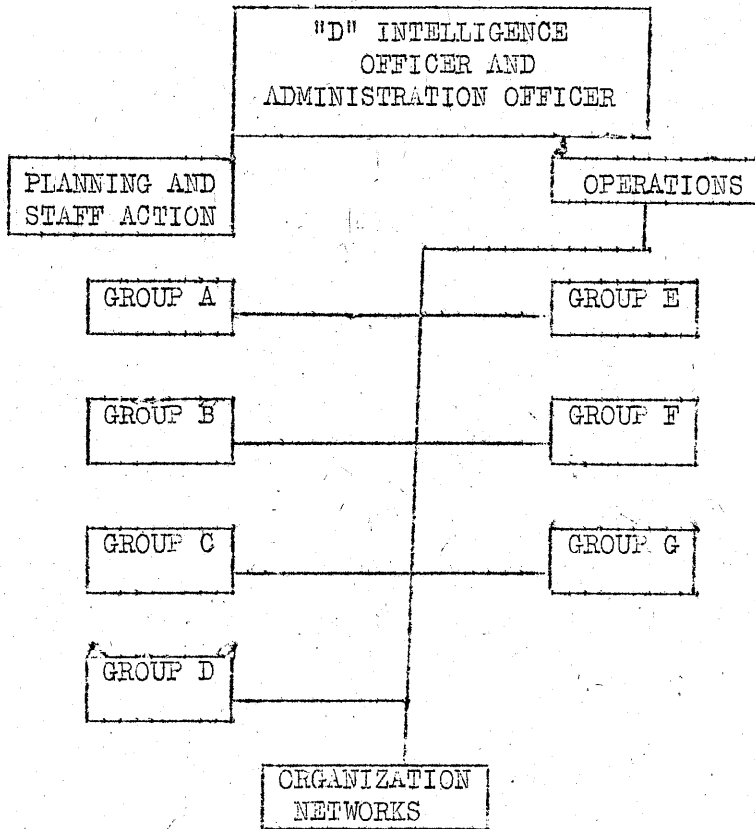
1. AUTHORITY.

- a. Military Occupation Handbook, SHAEF, Chapter XI, Part I, Par. 517.
- b. Operation Plan ECLIPSE, Twelfth U. S. Army Group, Second Draft, Par. 70(2).

2. PURPOSE. To destroy the NSDAP and its affiliated organizations in the First U. S. Army zones of action and occupation through the collection, evaluation and dissemination of information concerning (a) leaders of Nazi organizations who may have avoided detection and arrest by hiding or assuming false identities and (b) efforts to prolong the existence of Nazi organizations and activities contrary to the rules of Military Government by underground activities and the use of legal organizations for subversive purposes.

3. ORGANIZATION.

a. The "D" Intelligence Subsection will function as a separate subsection under the AC of S, G-2, First U. S. Army. Its activities will be closely coordinated with the Counterintelligence Subsection of the same office. It will operate as indicated in the following chart:



b. The following is a break-down of the occupational targets assigned to groups as in Par. a above and a resume of personnel assigned to the subsection:

"D" Intelligence Officer and Sub-Section Chief	1 officer
Administrative Officer	1 officer

Group A.

Government Administration	1 officer - Group Head
Civil Service	1 officer - Assistant

**UNCLASSIFIED**

DAF ~~German Labor Organizations~~  
Reich ~~German Labor Organizations~~

**UNCLASSIFIED**

1 EM - Stenographer Clerk  
1 EM - Driver

Group B.

SS  
NSKK  
NSFK

1 officer - Group Head  
1 officer - Assistant  
1 EM - Stenographer Clerk  
1 EM - Driver

Group C.

NSDAF  
SA  
Propaganda Services  
Professional Organizations

1 officer - Group Head  
1 officer - Assistant  
1 EM - Stenographer Clerk  
1 EM - Driver

Group D.

BDM  
Frauenschaft

German Women

1 OSS Representative (female)  
1 OSS Representative or  
WAC Officer - Assistant  
(female)  
1 Stenographer Clerk  
(WAC Corporal or Sergeant)  
1 EM - Driver

Group E

HJ  
RAD  
German School System  
Teachers Organizations

1 officer - Group Head  
1 officer - Assistant  
1 EM - Stenographer Clerk  
1 EM - Driver

Group F.

Foreign Workers

1 officer - Group Head  
1 EM - Stenographer Clerk  
1 EM - Driver

Group G.

Industrialists  
Technicians  
Miscellaneous

1 officer - Group Head  
1 officer - Assistant  
1 EM - Stenographer Clerk  
1 EM - Driver

c. German speaking personnel will be used as far as possible in the above groups.

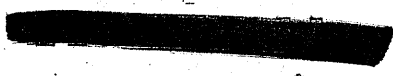
d. Officers in charge of groups A to G inclusive will obtain all the information possible from every source. Each group will maintain a net of informants.

4. REPORTS

a. Reports will be rendered the AC of S, G-2, by "D" Section officers twice monthly on their activities and spot memorandum reports on any information obtained for necessary dissemination or file.

b. The Administrative Officer will render monthly reports to the AC of S, G-2 on all expenditures.

**UNCLASSIFIED**





[REDACTED]

5. ADMINISTRATION. The Administrative Officer will maintain files of all information and case histories of informants. He will issue passes and identity cards to informants and handle all administrative matters including funds pertaining to the "D" Section.

6. SECURITY. All necessary measures will be taken to safeguard the activities of the subsection and its informants.

UNCLASSIFIED

UNCLASSIFIED

**UNCLASSIFIED**

ANNEX No. 2

"E" SECTION PLAN

OPERATION

"ECLIPSE"

HEADQUARTERS FIRST U.S. ARMY

APO 230

APPENDIX No. VII

"E" SECTION PLAN

**UNCLASSIFIED**

# UNCLASSIFIED

## SECTION PLAN

### 1. GENERAL.

a. Title. The "E" Section is a cover name for the OSS Detachment attached to First United States Army. For security reasons it is felt that this detachment should not be known as "OSS" inside Germany.

b. Definition and Mission. The OSS Detachment in the past has supplied the AC of S, G-2 with intelligence from sources not usually available to Armies. This intelligence for the most part has been positive; however, special Counter-Intelligence information is also supplied. Under "ECLIPSE" conditions there will be no essential change. Through the use of Agents and by other means, OSS will continue to supply intelligence information. The present task will be to ensure that the AC of S, G-2 receives information about any undiscovered "intelligence targets" as well as information concerning any attempts made by the enemy to organize himself into groups which will act detrimentally to the Army Commander.

### 2. METHOD OF OPERATION.

a. Partial "ECLIPSE". If a state of partial "ECLIPSE" is declared, and the First United States Army still is in active combat against the enemy, OSS will place agents in strategic localities behind the enemy lines by infiltration and paradrop (from Twelfth Army Group).

b. Complete "ECLIPSE". In the event of complete "ECLIPSE", the OSS Detachment will leave permanent agent personnel in key centers within the Army area. These agents will report on all phases of Intelligence which are of interest to the AC of S, G-2, such as morale, subversive groups, and accomplishments of specific general intelligence missions as requested.

c. Coordination with other Agencies. To aid other OSS Detachments which may be still operating and to fulfill the requests from higher Headquarters, OSS will continue to work in close conjunction with the Documents Section (see Appendix IV) and the Interrogation Center (see Appendix V). The recruitment of agents for the use of this and other detachments will continue. The Interrogation Center and the Counter Intelligence Corps have aided the OSS in this work. No change is contemplated in this procedure.

### 3. ORGANIZATION.

a. Personnel. The present detachment will remain according to its present T/O unless a change is directed by the Army Commander.

b. Communications. OSS will continue to provide its own communications linking it with Paris, London, the other Armies, and Special Missions.

c. Transportation and Equipment. The OSS will continue to furnish its own transportation and equipment and will continue to draw replacements from Army.

### 4. COUNTER-INTELLIGENCE.

a. Function. One of the major OSS functions will be accomplished by the OSS/SCI Liaison Officer. He will provide "special" intelligence to the AC of S, G-2, on the enemy intelligence organizations, the Sicherheitsdiens and Abwehr.

b. Interrogation. The SCI Liaison Officer will not be used as an interrogator except on special cases as directed by the AC of S, G-2. He will read and

UNCLASSIFIED



~~UNCLASSIFIED~~

check with the records available to him all interrogations of known agents.

c. Administration. For administration only, the SCI Liaison Officer will be attached to the OSS Detachment; however, for operations he is working directly for the AC of S, G-2.

d. Other Counter-Intelligence Activities. The use of agents in an effort to determine what subversive elements are operating against U.S. forces will be accomplished by the OSS Detachment in conjunction with the CIC.

~~UNCLASSIFIED~~